

Free US Ground Shipping on orders \$99 or more. Use code COLOR at checkout.

Special Offers Find a P

COLOR INTELLIGENCE:

Spot vs. Process Color

Spot Colors

Colors created without screens or dots, such as those found in the PANTONE MATCHING SYSTEM®, are referred to in the industry as spot or solid colors. From a palette of 18 basic colors, each of the spot colors in the PANTONE MATCHING SYSTEM is mixed according to its own unique ink mixing formula developed by Pantone. You probably mixed yellow and blue paint to get green in your youth. Creating a PANTONE Spot Color is similar in concept, but with the added need for precision.



The precision begins with the printing ink manufacturers who are licensed by Pantone to manufacture inks for mixing PANTONE MATCHING SYSTEM Colors. To retain their license, they must annually submit samples of the 18 basic colors for approval by Pantone. Printers can then order the colors by number or mix it themselves according to the ink mixing formula in a PANTONE® FORMULA GUIDE. A PANTONE Chip supplied with the ink and/or job ensures that the printer achieves the color desired by the customer.



The PANTONE® FORMULA GUIDE with 1,867 PANTONE PLUS Colors on coated and uncoated stock.

Each color in the System has a unique name or number followed by either a C or U. The letter suffix refers to the paper stock on which it is printed: C for Coated paper and U for Uncoated paper. Also created without screens, PANTONE metallic and pastel colors are considered part of the PANTONE MATCHING SYSTEM.

Due to the gamut of the 18 basic colors, some spot colors will be cleaner and brighter than if they were created in the four-color process described below. Spot colors are commonly used in corporate logos and identity programs, and in one, two or three-color jobs.

Process Colors

The most common method of achieving color in printing is referred to as CMYK, four-color process, 4/c process or even just process. To reproduce a color image, a file is separated into four different colors: Cyan (C), Magenta (M), Yellow (Y) and Black (K).



A color image is separated into CMYK. When printed on paper, the original image is recreated.

During separation, screen tints comprised of small dots are applied at different angles to each of the four colors. The screened separations are then transferred to four different printing plates, one for each color, and run on a printing press with one color overprinting the next. The composite image fools the naked eye with the illusion of continuous tone.

Introducing
Pantone Studio
Transform inspiration,
and share your work to
the language of Pantone

Download on the App Store

COLOR CONSUMERS FROM PANTONE
LEARN MORE >



PANTONE 4-COLOR PROCESS guide set. Displays 3,010 CMYK combinations with screen tint percentages. A guide on uncoated paper is included in the set.

Process colors are represented as percentages of cyan, magenta, yellow and black. Varying the percentages offers thousands of color possibilities. When four-color process printing is used to reproduce photographs, decorative elements such as borders and graphics can be created out of process colors. This helps to avoid the added expense of an extra plate needed to print each spot color.

Converting spot colors to process colors.

Oftentimes, a spot PANTONE MATCHING SYSTEM Color is requested when creating a process-printed piece. To save money, the spot color should be evaluated to see how it will look if printed in CMYK or in ECG printing – CMYK+OGV. While some colors can be simulated well, there are many that are outside the possible color gamut for that process and will look quite different. As the quality of the resulting color conversion is very subjective, the designer can make decisions using the PANTONE COLOR BRIDGE® guide, as well as a PANTONE EXTENDED GAMUT Coated Guide.



Extended Color Gamut process colors

Extended color gamut (ECG) printing, sometimes referred to as Fixed Palette Printing, is not a new concept but is rapidly gaining in popularity. Widespread adoption has been limited until the last few years. The basic premise of ECG is adding additional base inks to traditional CMYK in order to extend the color gamut.

Pantone has adopted a formulation for ECG printing of our own by adding three base inks, Orange, Green and Violet (OGV), to the CMYK ink set. The PANTONE PLUS SERIES EXTENDED GAMUT Coated Guide has printed 7-Color process simulations of all 1,729 solid PANTONE MATCHING SYSTEM Colors (with an aqueous finish). This enables printers to more accurately match and reproduce a wider range of PANTONE Spot Colors.



The PANTONE® COLOR BRIDGE™ guide displays each PANTONE MATCHING SYSTEM Color and its corresponding simulation in CMYK.


Related Links:


- [Pantone Formula Guide](#)
- [Pantone Color Bridge Set](#)
- [Pantone EXTENDED GAMUT Guide](#)
- [Pantone CMYK Guide](#)

2 Comments **Pantone.com**

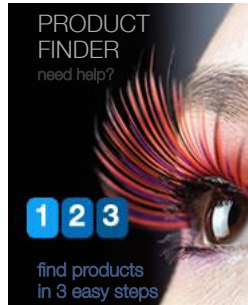
Recommend 1 [Share](#)

 Join the discussion...

 **Sanne v W** • 23 days ago
I would really hope multiprimary displays would come available to consumers any time soon to overcome colour issues between spot colour print and editing on screens.
[^](#) | [v](#) • [Reply](#) • [Share](#)

 **Faria Ahmed** • 9 months ago
What is Screening of colored versions for pantone colours?
[^](#) | [v](#) • [Reply](#) • [Share](#)

[Subscribe](#) [Add Disqus to your site](#) [Add Disqus](#) [Add](#) [Privacy](#)



Pantone News
Pantone Color Institute Releases Fall 2017 Fashion Color Report for New York and London Fashion Week
Pantone Color Institute Releases Fall 2017 Fashion Color Report for New York and London Fashion Week Palettes lean into warm and comforting c...

Pantone Color Institute Introduces VIEWPOINT COLOUR, A Global Color and Trend Magazine for Color-Conscious Designers
Pantone Color Institute Introduces VIEWPOINT COLOUR, A Global Color and Trend Magazine for Color-Conscious Designers VIEWPOINT COLOUR empower...

Color of the Day:
AMBERLIGHT PANTONE 14-1217

find a **PANTONE Color**

Stay Connected: [Twitter](#) [Facebook](#) [Pinterest](#) [Instagram](#) [LinkedIn](#)

Pantone LLC is a wholly owned subsidiary of X-Rite,
© Pantone LLC, 2017.
All rights reserved.

[Design](#) [Legal](#) [Sitemap](#)